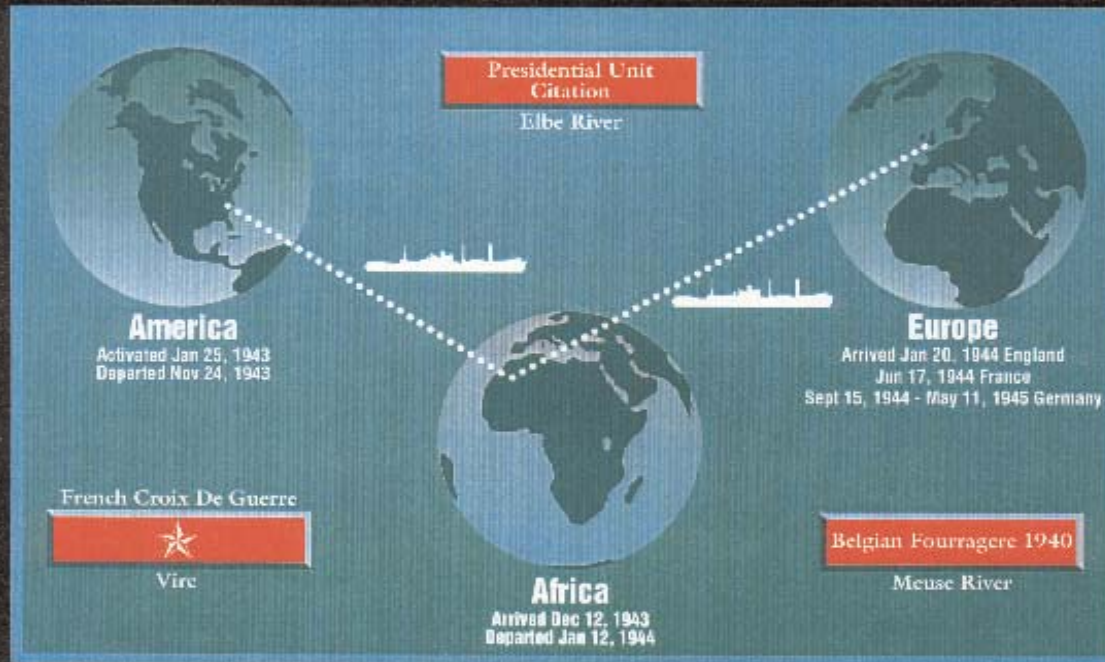




# 82nd Engineer Combat Battalion 1943-1945



## Awards

- Silver Stars  
8
- Bronze Stars  
55
- Purple Hearts  
160
- Posthumously  
24

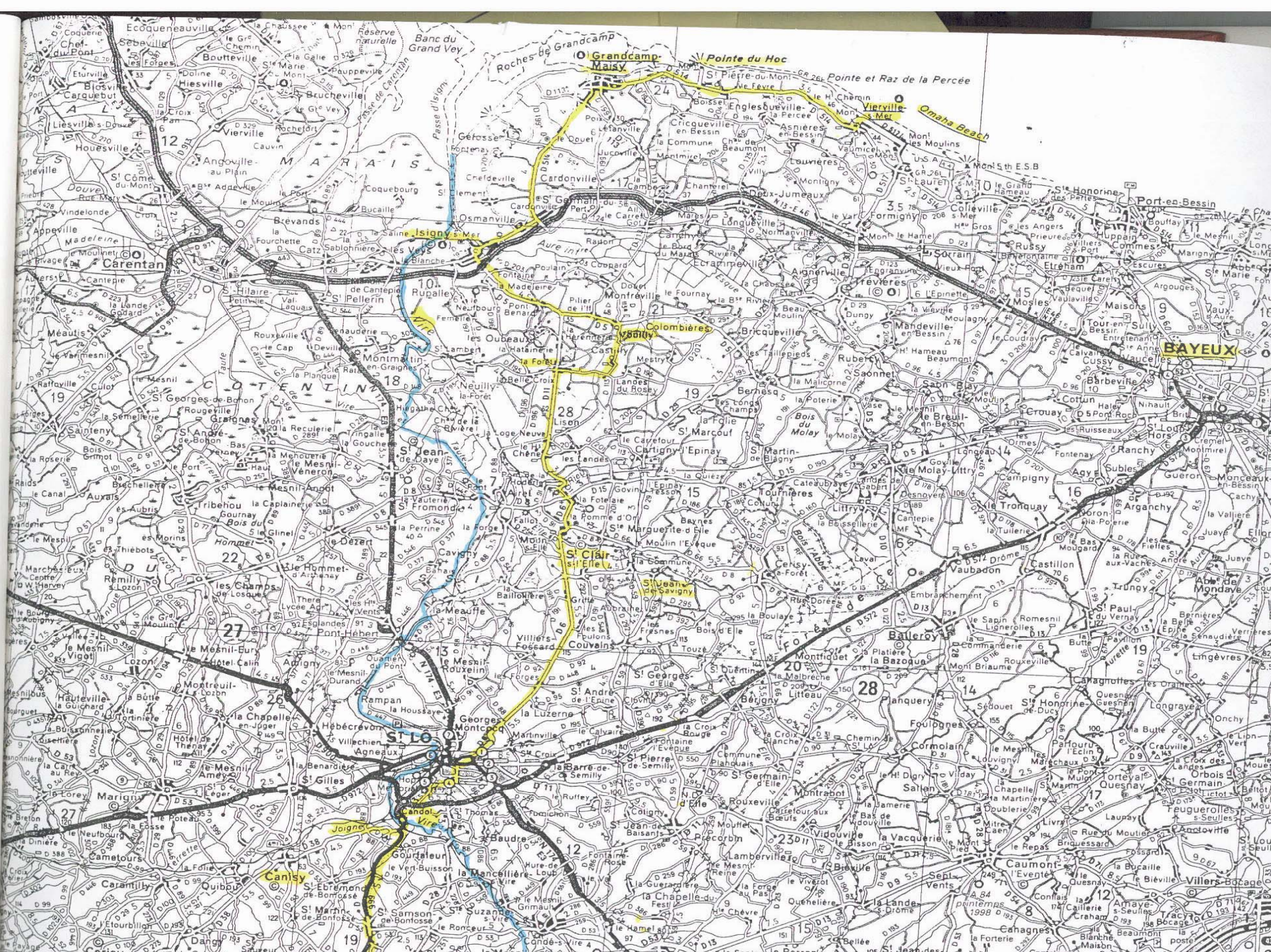
## Dedication

This plaque honors all members of the **82nd Engineer Combat Battalion** who served in the XIX Corps of the 1st and 9th armies during WW II. May they be remembered for their stamina, patience, dedication, courage and valor.

Inactivated Nov 21, 1945

## Campaigns

- Normandy**  
Jun 17, 1944 to July 24, 1944
- Northern France**  
July 25, 1944 to Sept 14, 1944
- Rhineland**  
Sept 15, 1944 to Mar 21, 1945
- Central Europe**  
Mar 22, 1945 to May 11, 1945



Grandcamp-Maisy

Pointe du Hoc

Omaha Beach

Isigny-Mer

Colombières

St. Jean

St. Clair

Canisy

MARAIS

COTENTIN

Carentan

BAYEUX

12

19

22

27

19

101

18

7

13

10

12

105

28

15

15

20

12

19

15

15

20

20

15

16

16

16

28

14

12

15

16

16

19

17

12

15

16

16

19

17

12

15

16

16

19

17

12



8232-8248 Including views of 110' TS-BR 84' trestle tdwy br constr by A Co. B Co



8232-8248 Including views of 110' TS-BB, 84' trestle tdwy. br. constr. by A Co., B Co., 82 Engrs. Candol, Normandy France. 28 July '44



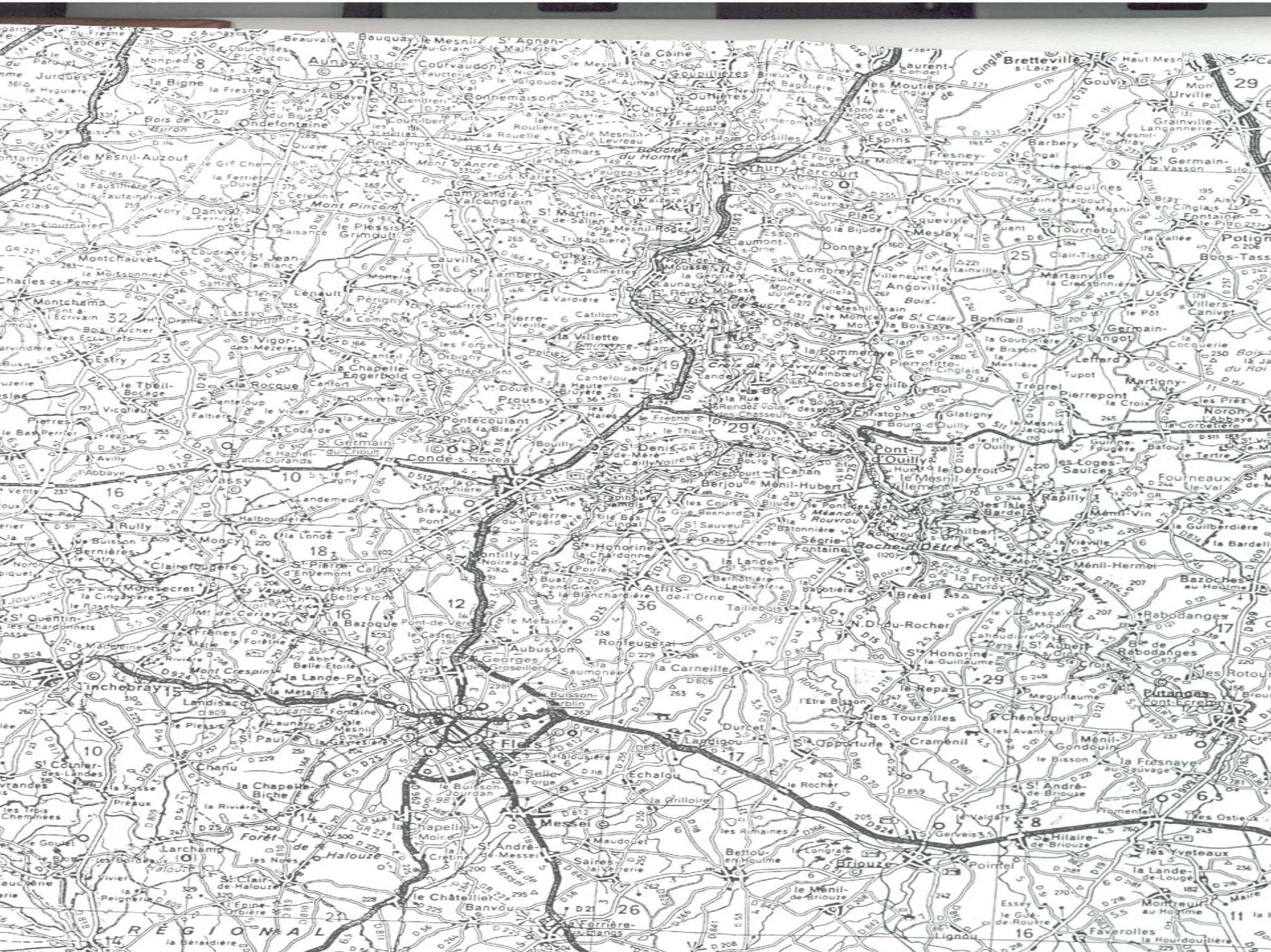
8232-8248 Including views of 110' TS-BB, 84' trestle tdwy. br. constr. by A Co., B Co.,  
82 Engrs. Candol, Normandy France. 28 July '44

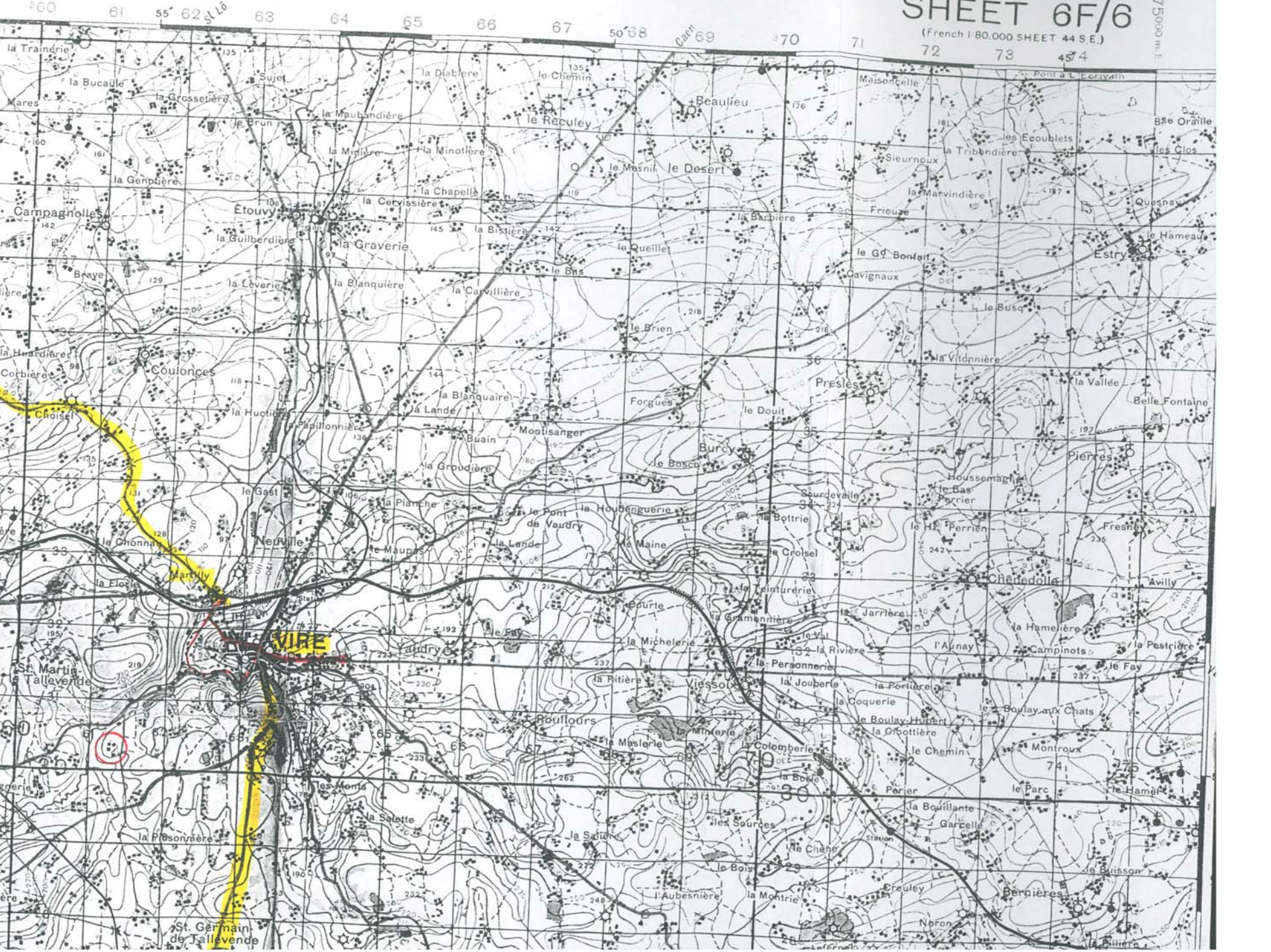
32<sup>ND</sup> ENGRS  
CANDOL, NORMANDY, FRANCE  
28 JULY 1944  
110' TS BB  
84' TRESTLE TREAD BR



8232-8248 Including views of 110' TS-BB, 84' trestle tdwy. br. constr. by A Co., B Co.,  
82 Engrs. Candol, Normandy France. 28 July '44



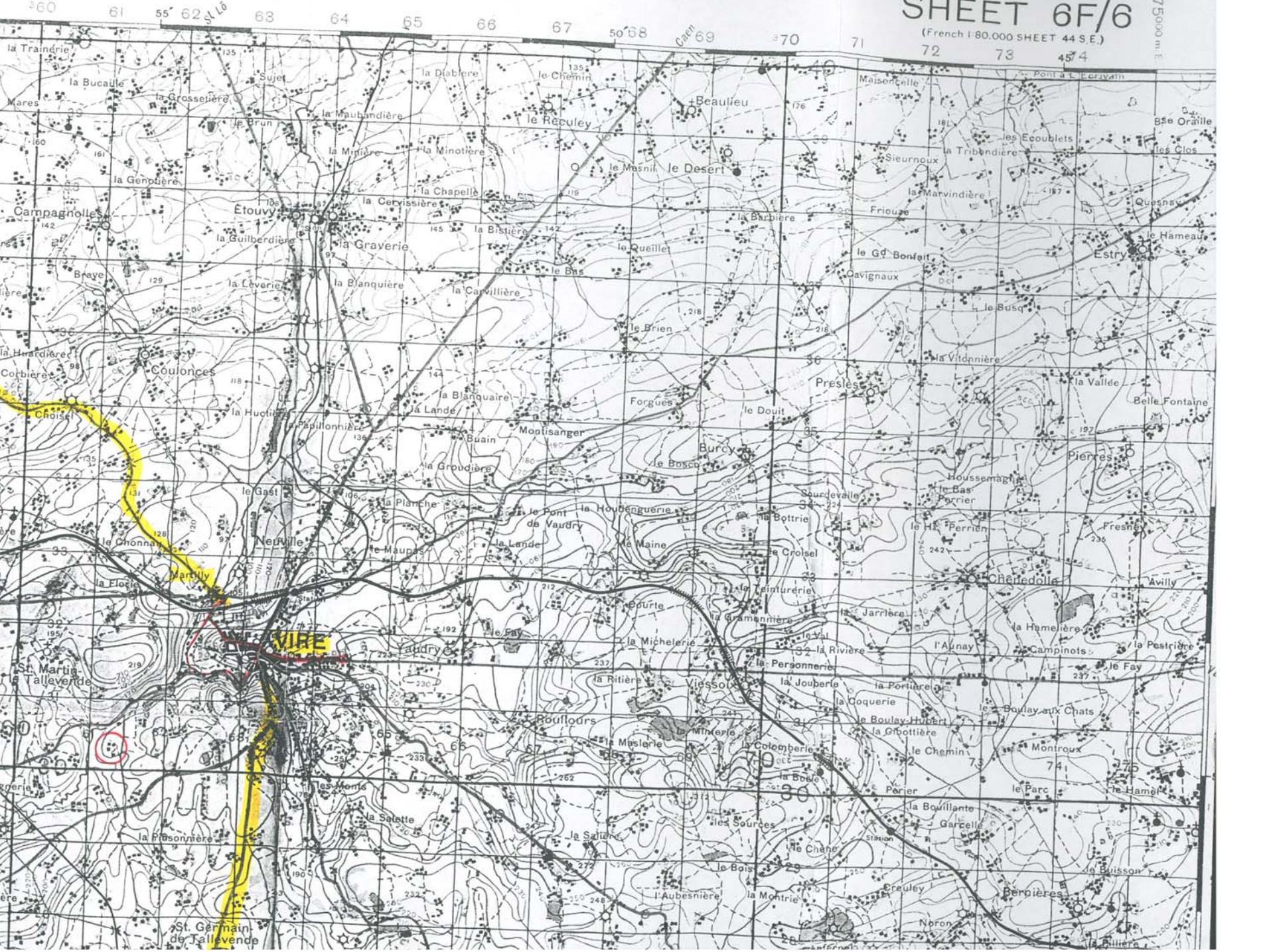


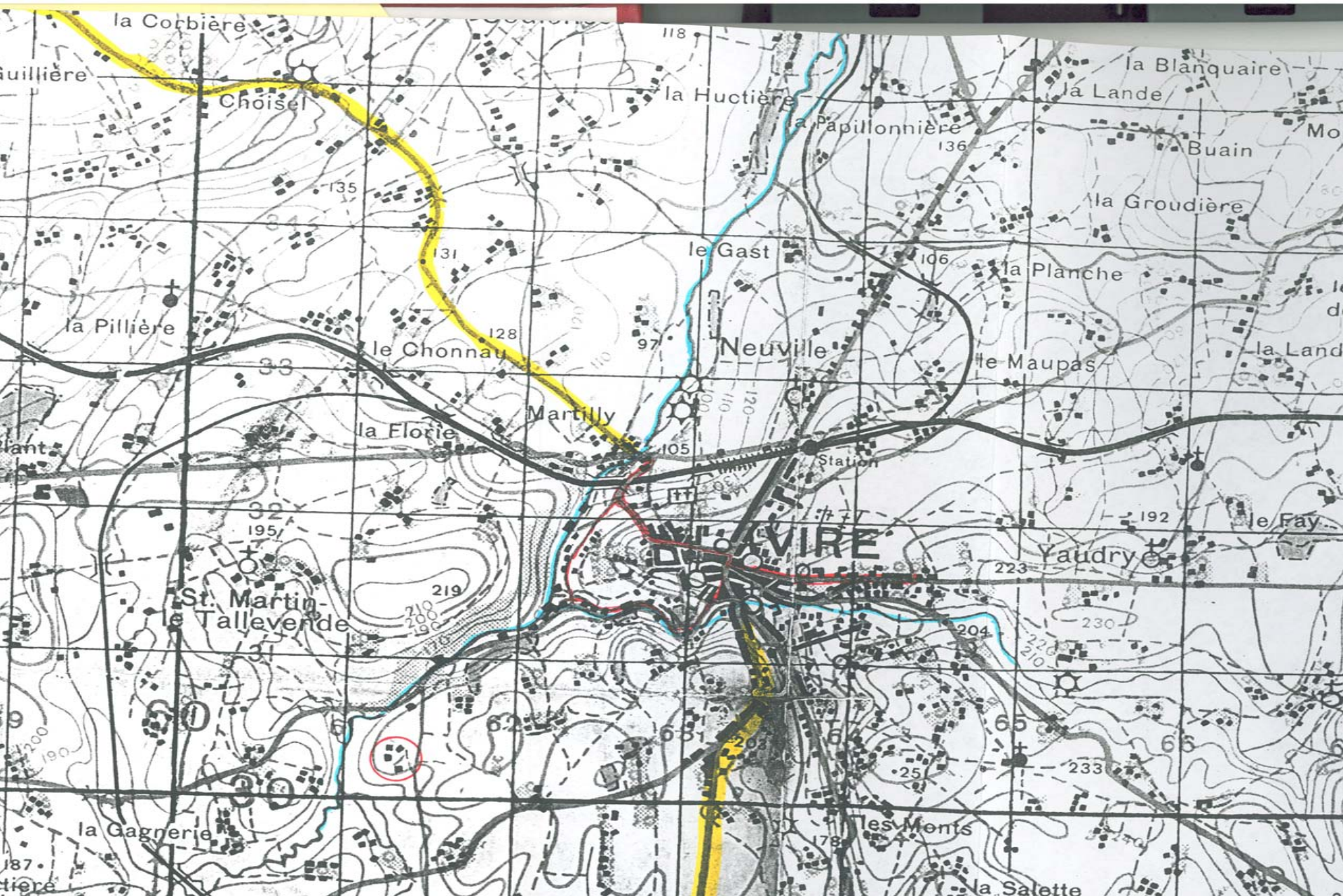


# SHEET 6F/6

(French 1:80,000 SHEET 44 S.E.)

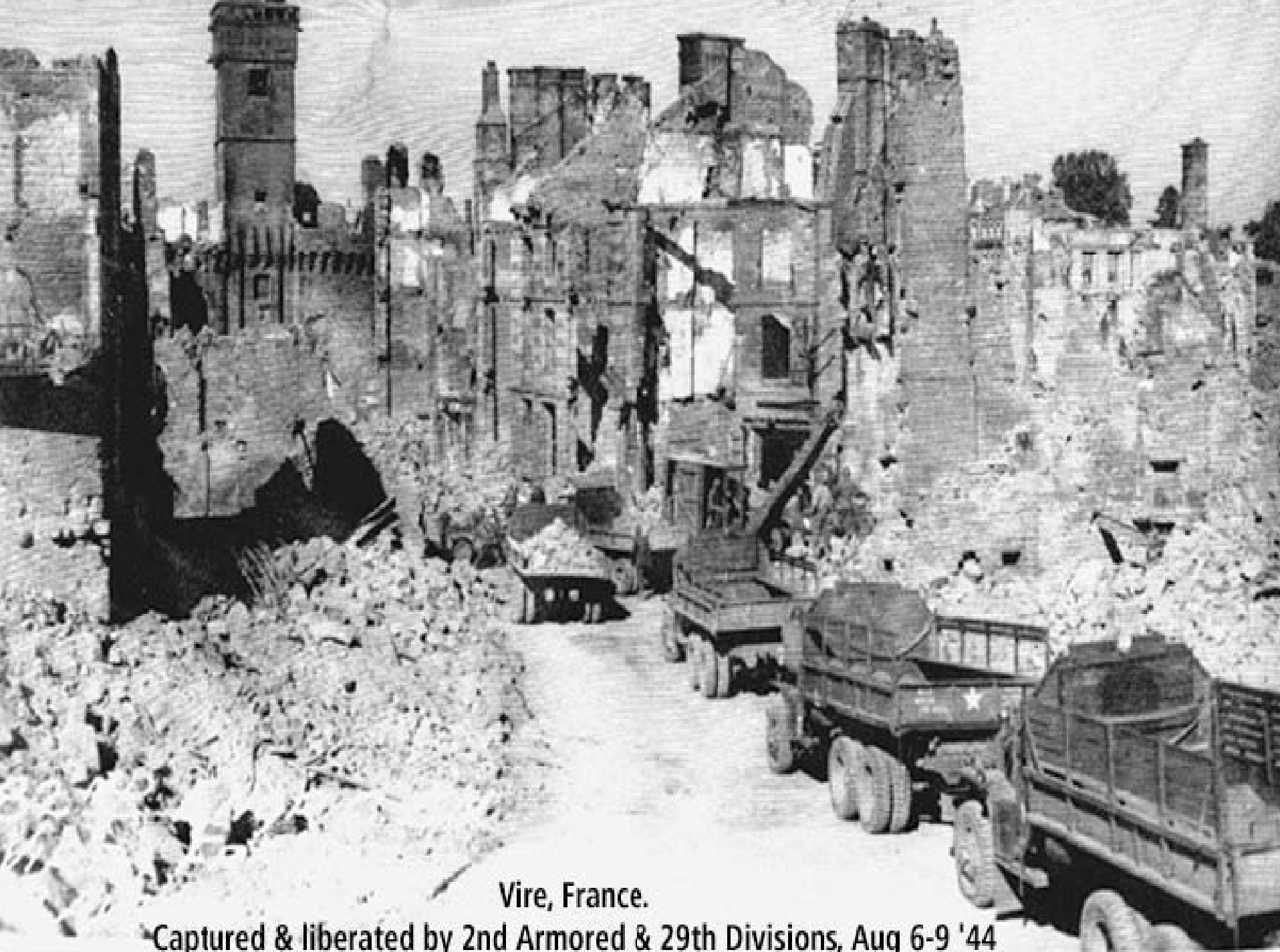
75000 m. E.





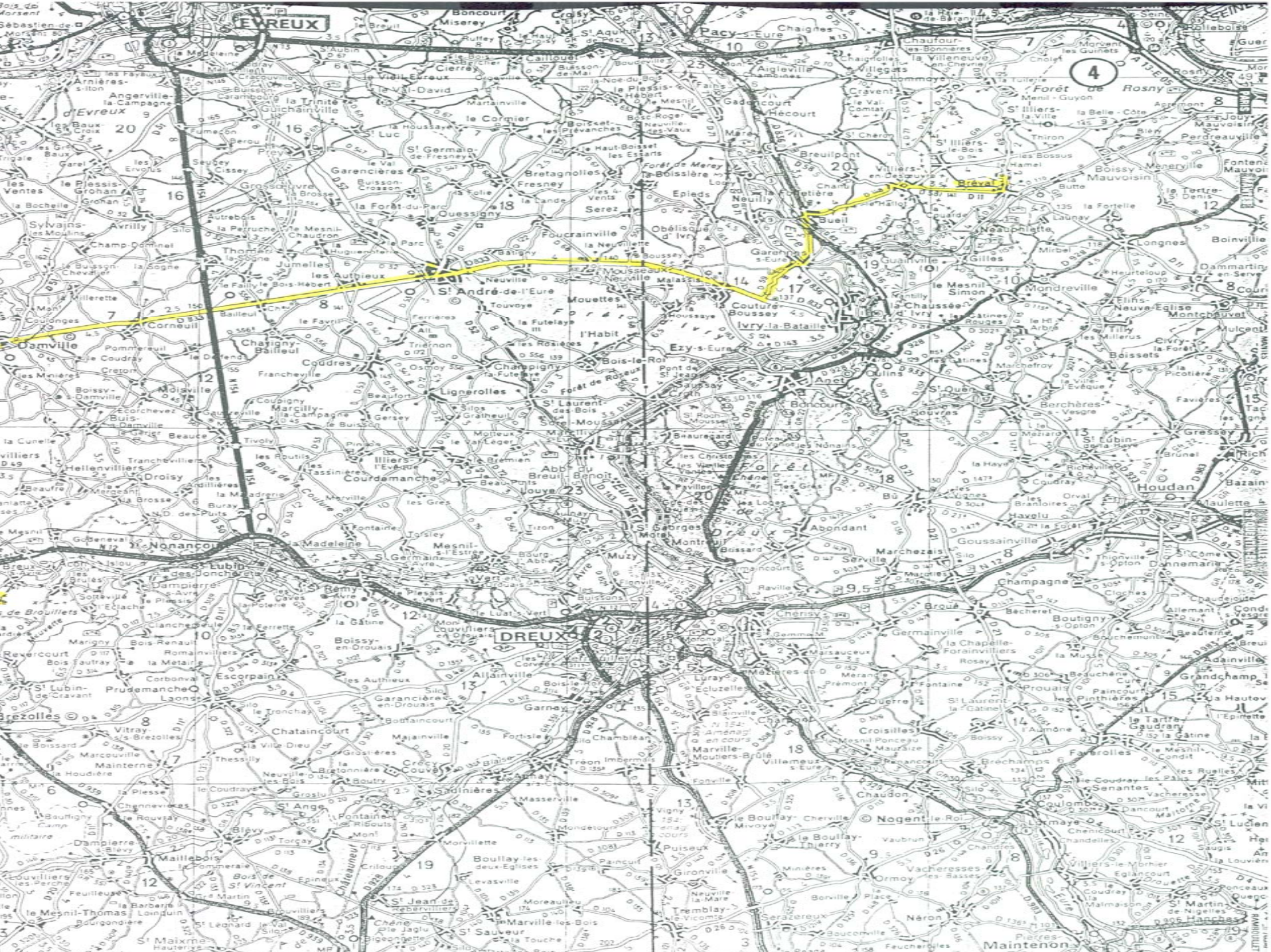


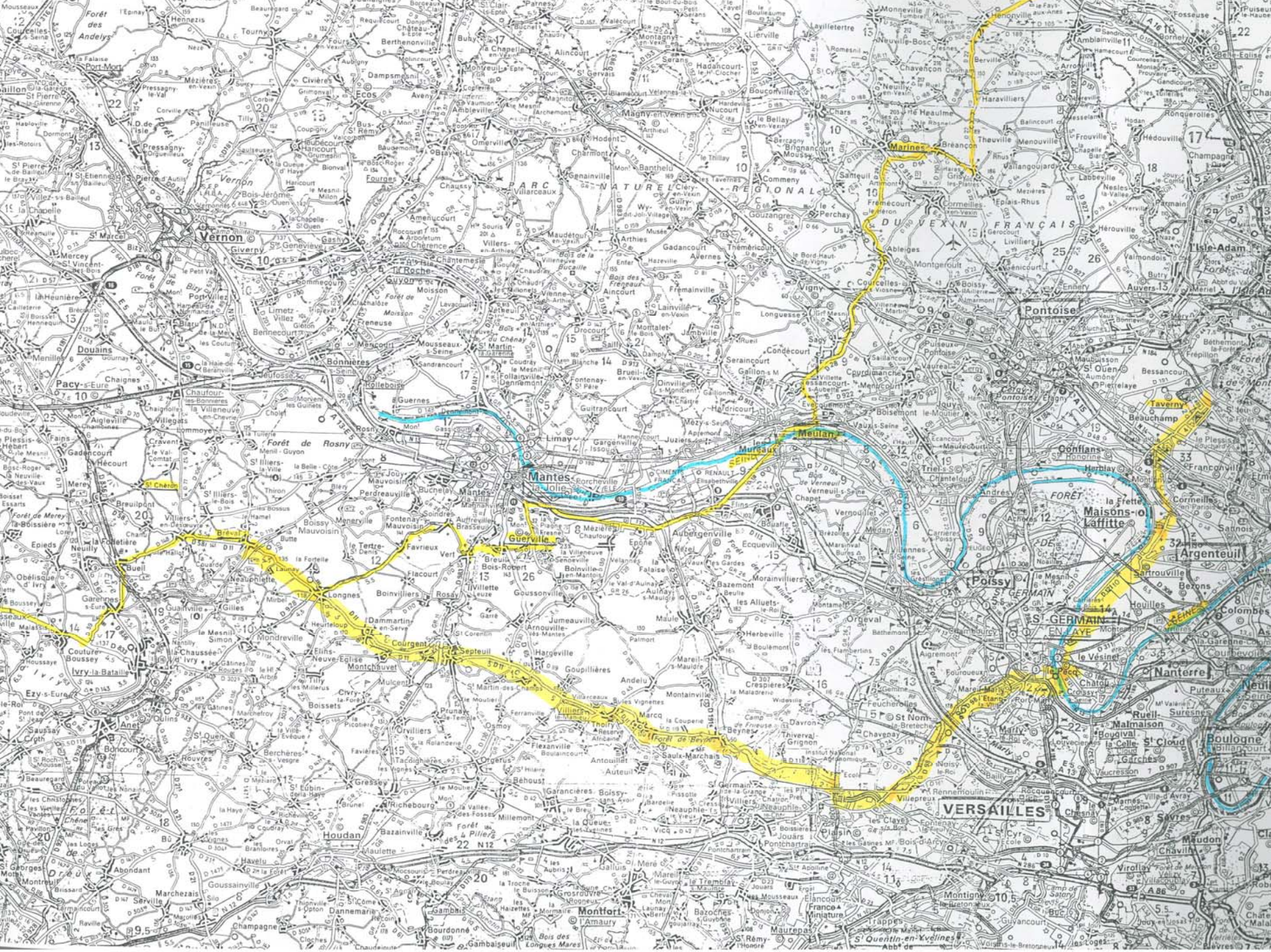
**Entrance to Market Square, Vire, France**



Vire, France.

Captured & liberated by 2nd Armored & 29th Divisions, Aug 6-9 '44





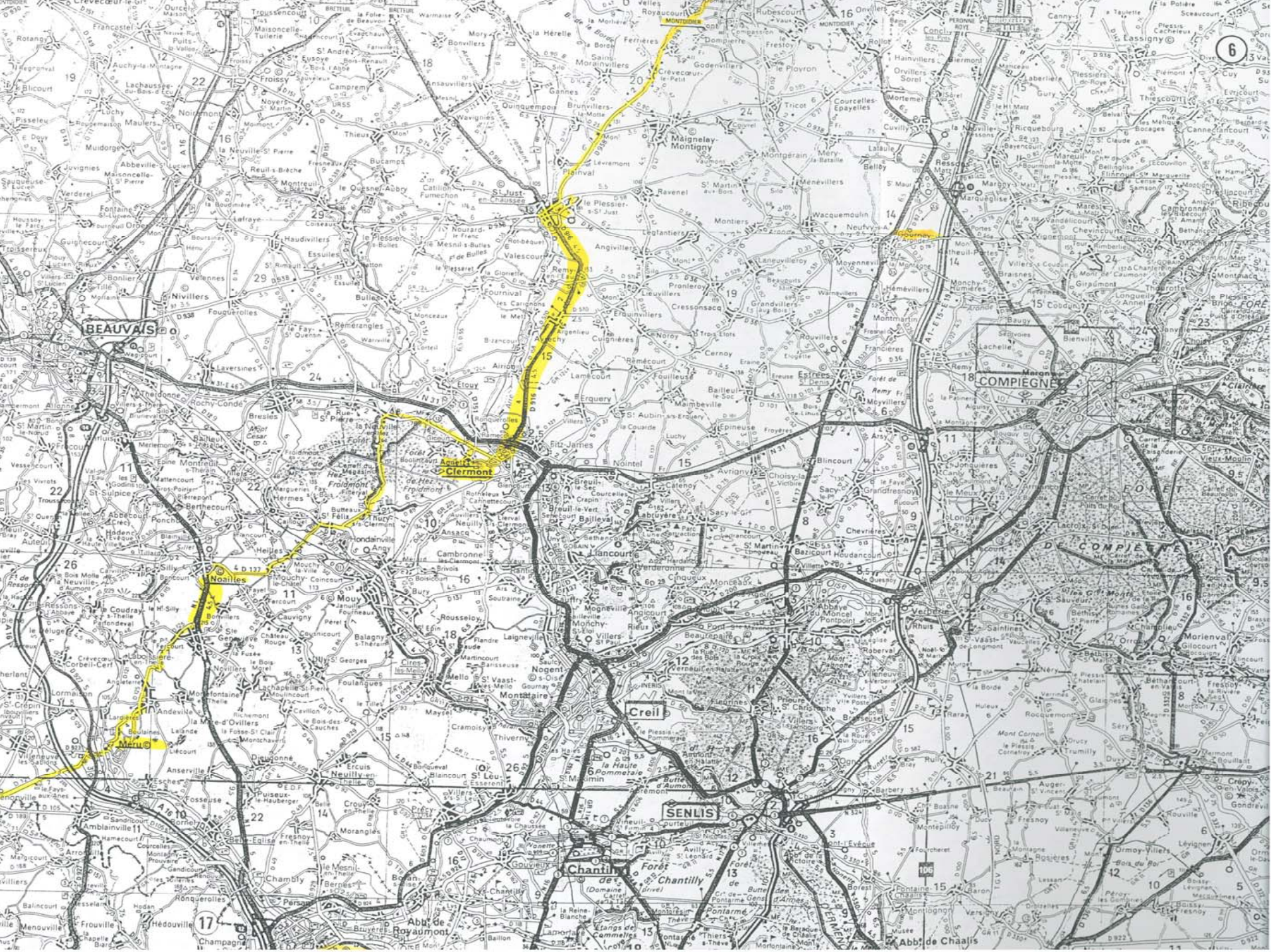


**Views of 720' Treadway Bridge, Seine Riv., Meulan, France;**





**Views of 720' Treadway Bridge, Seine Riv., Meulan, France;  
constr. by 82 Engr. C Btn. 29 Aug '44**



BEAUVAIS

COMPIÈGNE

Clermont

Creil

SEN LIS

Chantilly

Abb. de Chaalis

17

19

22

16

18

15

10

12

13

15

12

10

5

11

19

11

22

14

16

18

16

10

15

12

13

15

12

10

5

11

11

19

11

22

14

16

18

16

10

15

12

13

15

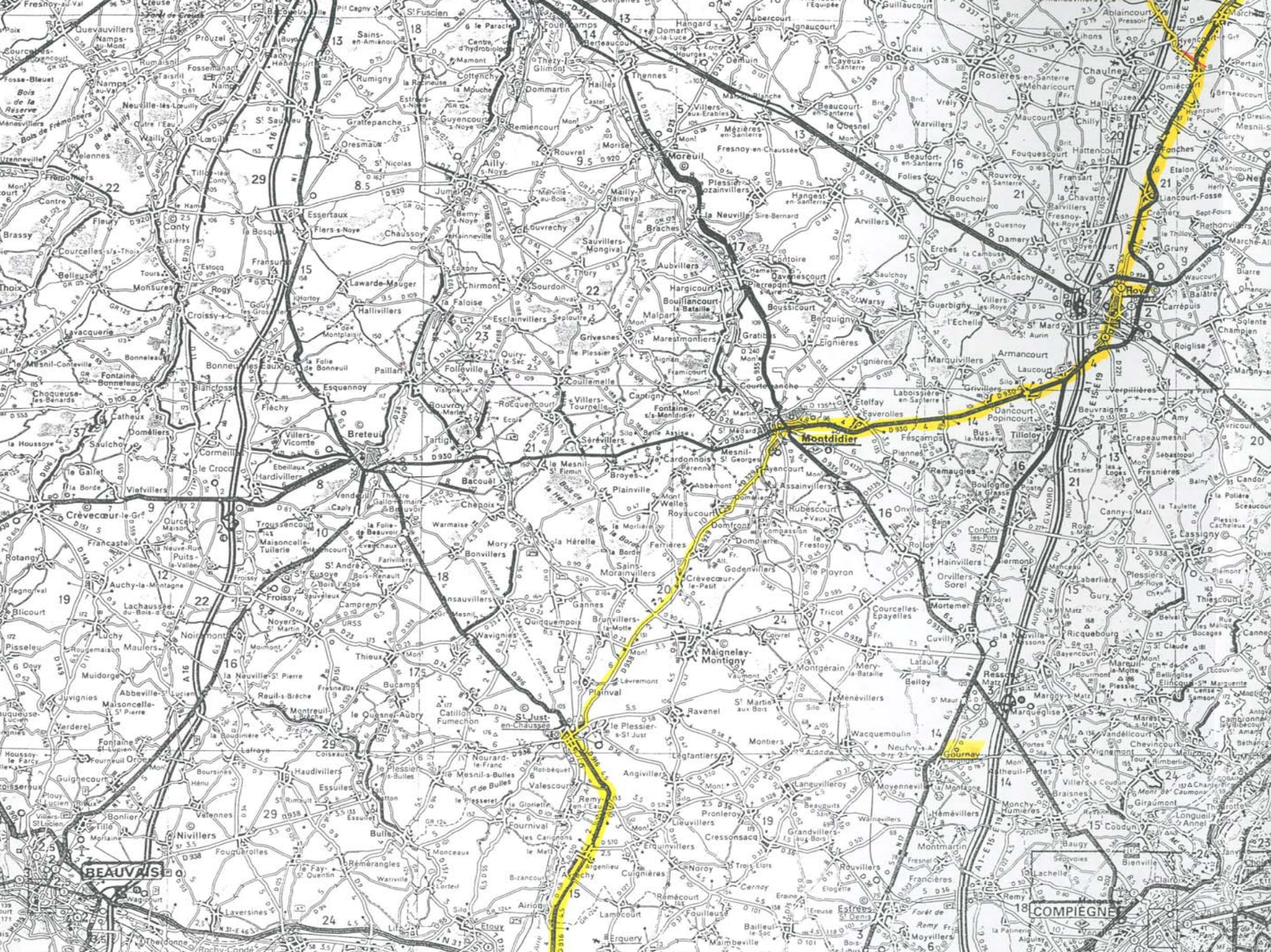
12

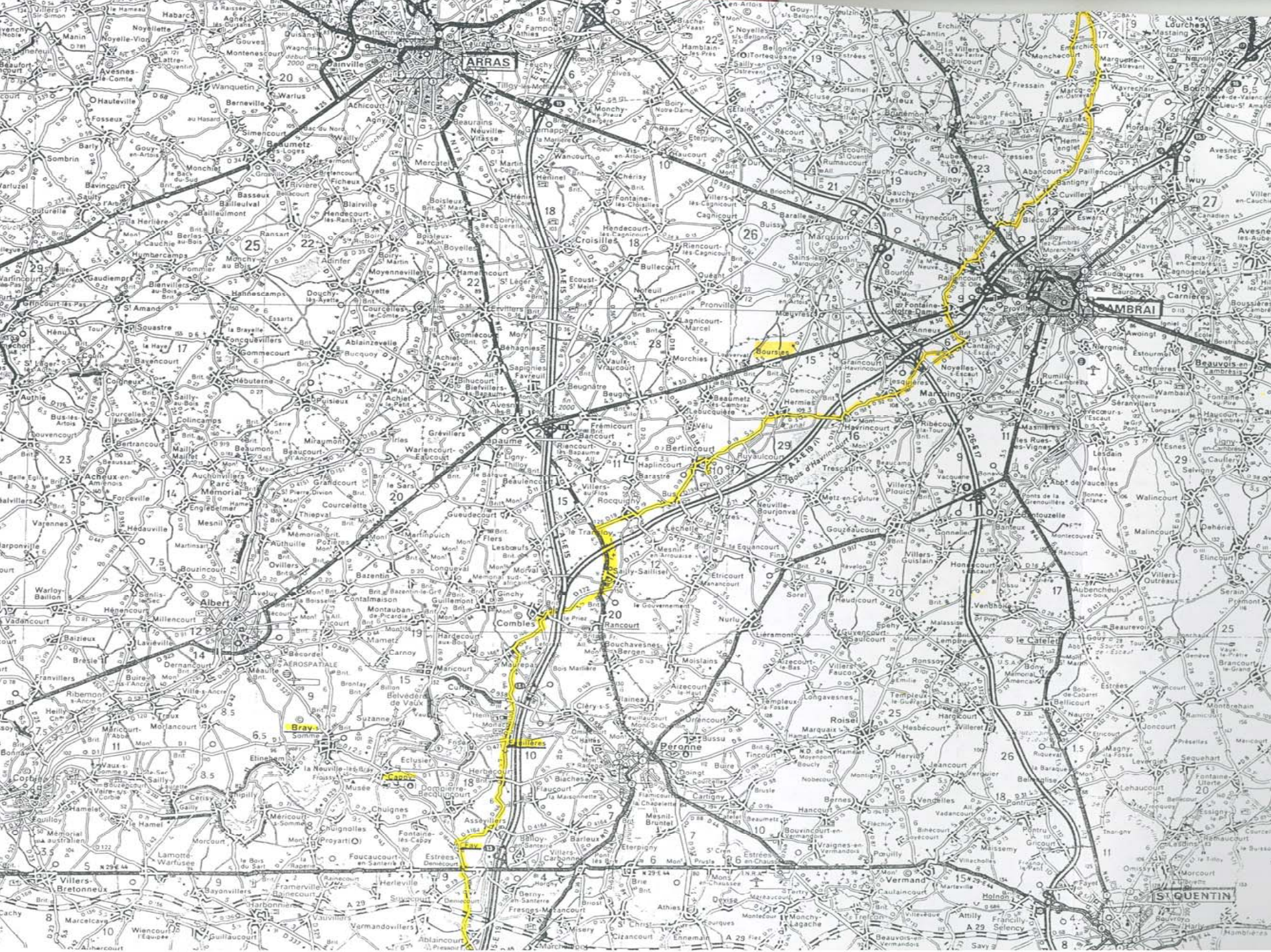
10

5

11

11





ARRAS

CAMBRAI

ST QUENTIN

25

26

29

20

11

18

12

15

18

15

27

19

29

25

15

20

8

20

22

17

14

7

12

6.5

3.5

9

18

19

28

11

15

20

10

6

6

19

21

7.5

16

24

20

12

10

6

17

23

6

10

2

17

15

18

15

6.5

7

11

11

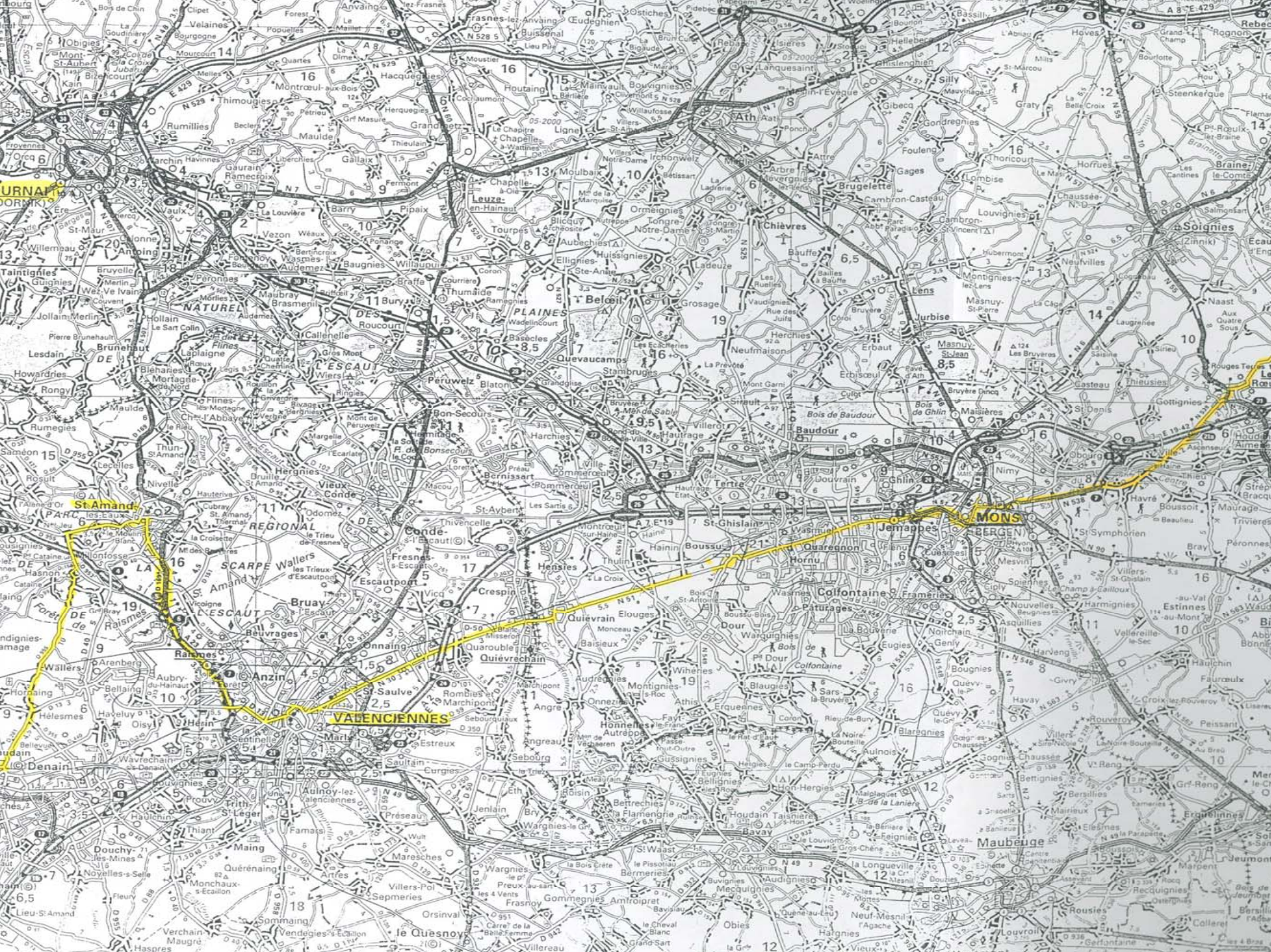
11

11

11

11

11

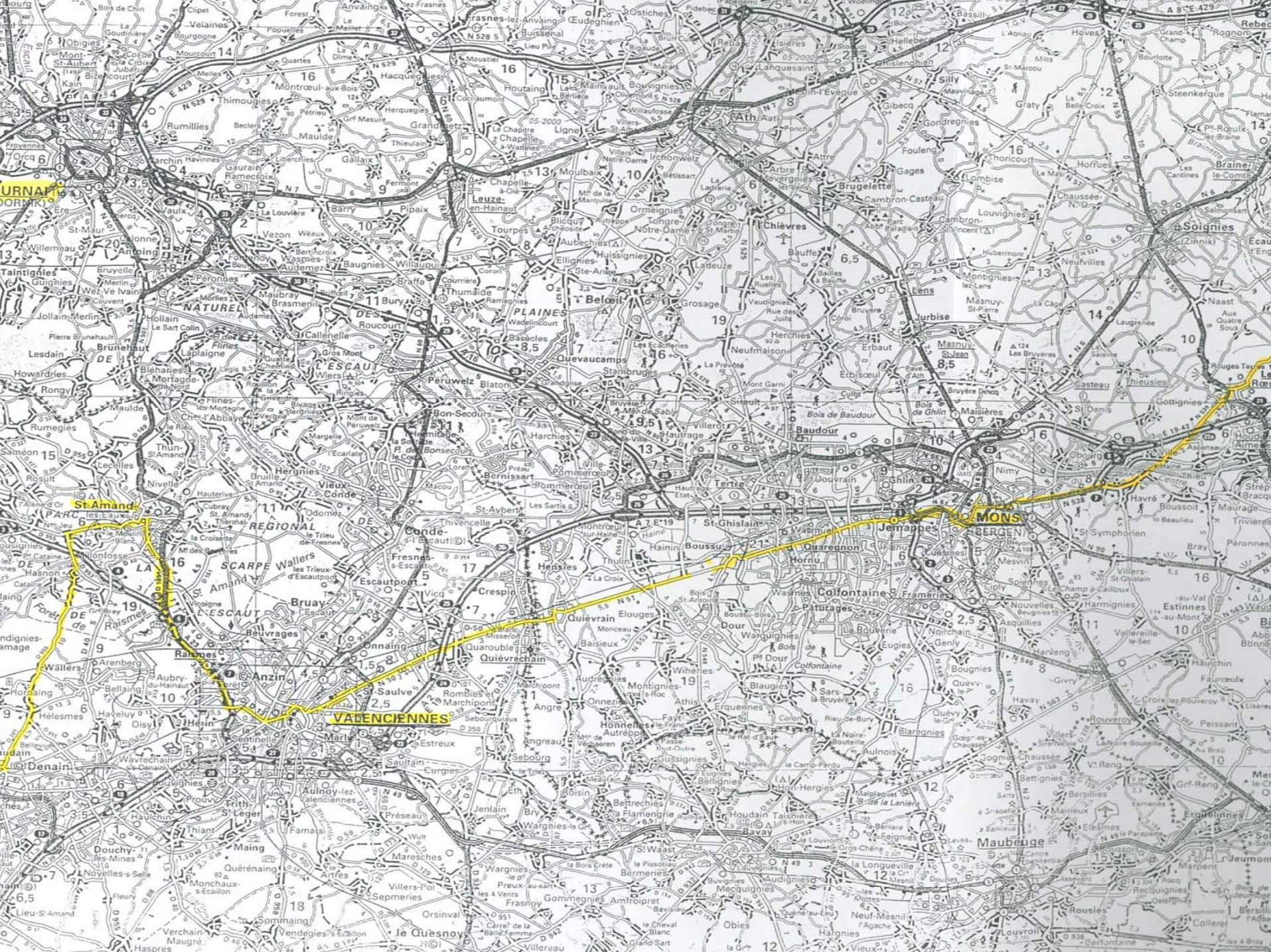


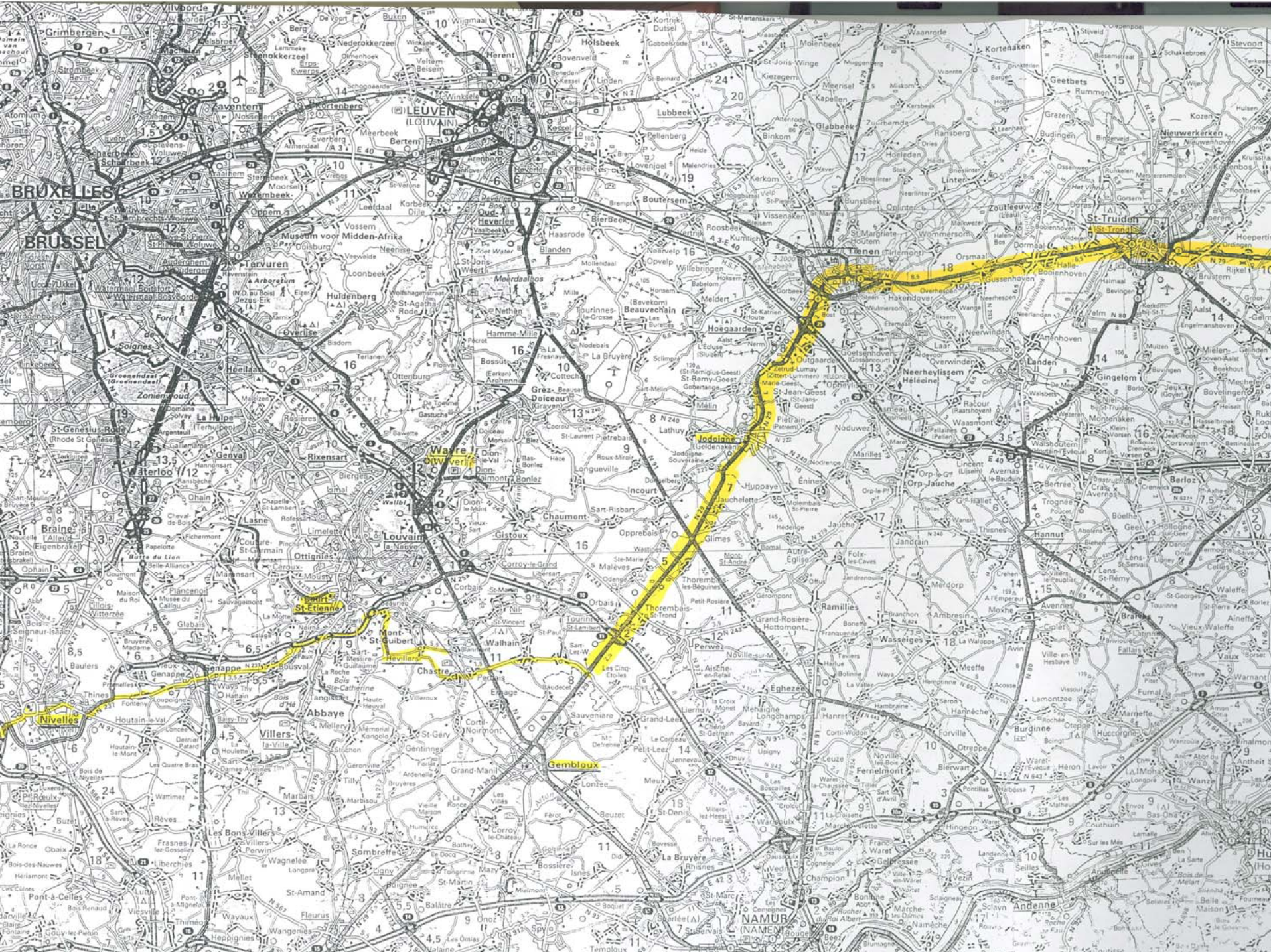
JURNAL  
FORMIK

St Amand

VALENCIENNES

LA MONS





BRUXELLES

BRUSSEL

LEUVEN (LOUVAIN)

Museum voor Midden-Afrika

Overijse

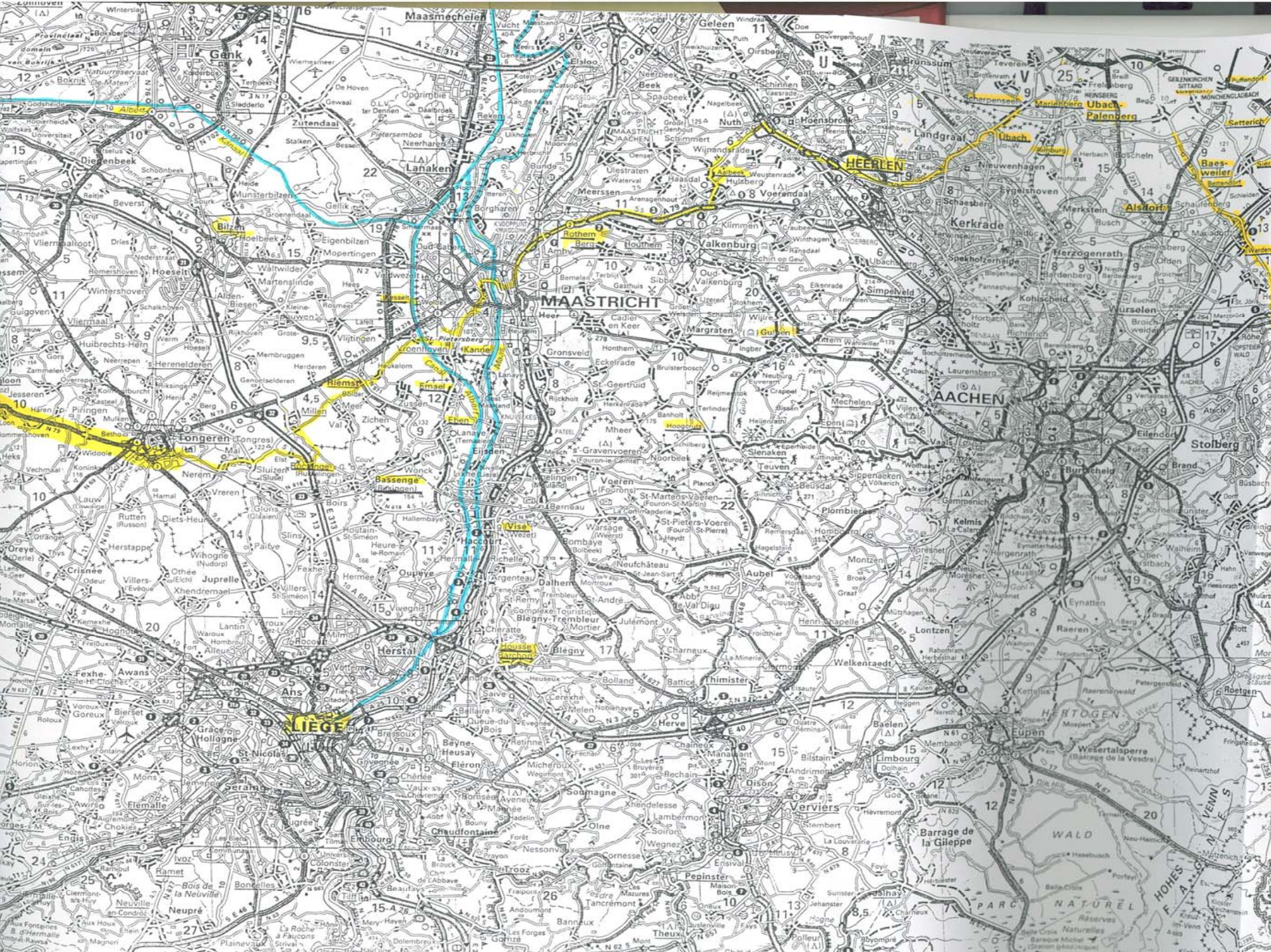
Wavre

Louvain-la-Neuve

Nivelles

Gembloux

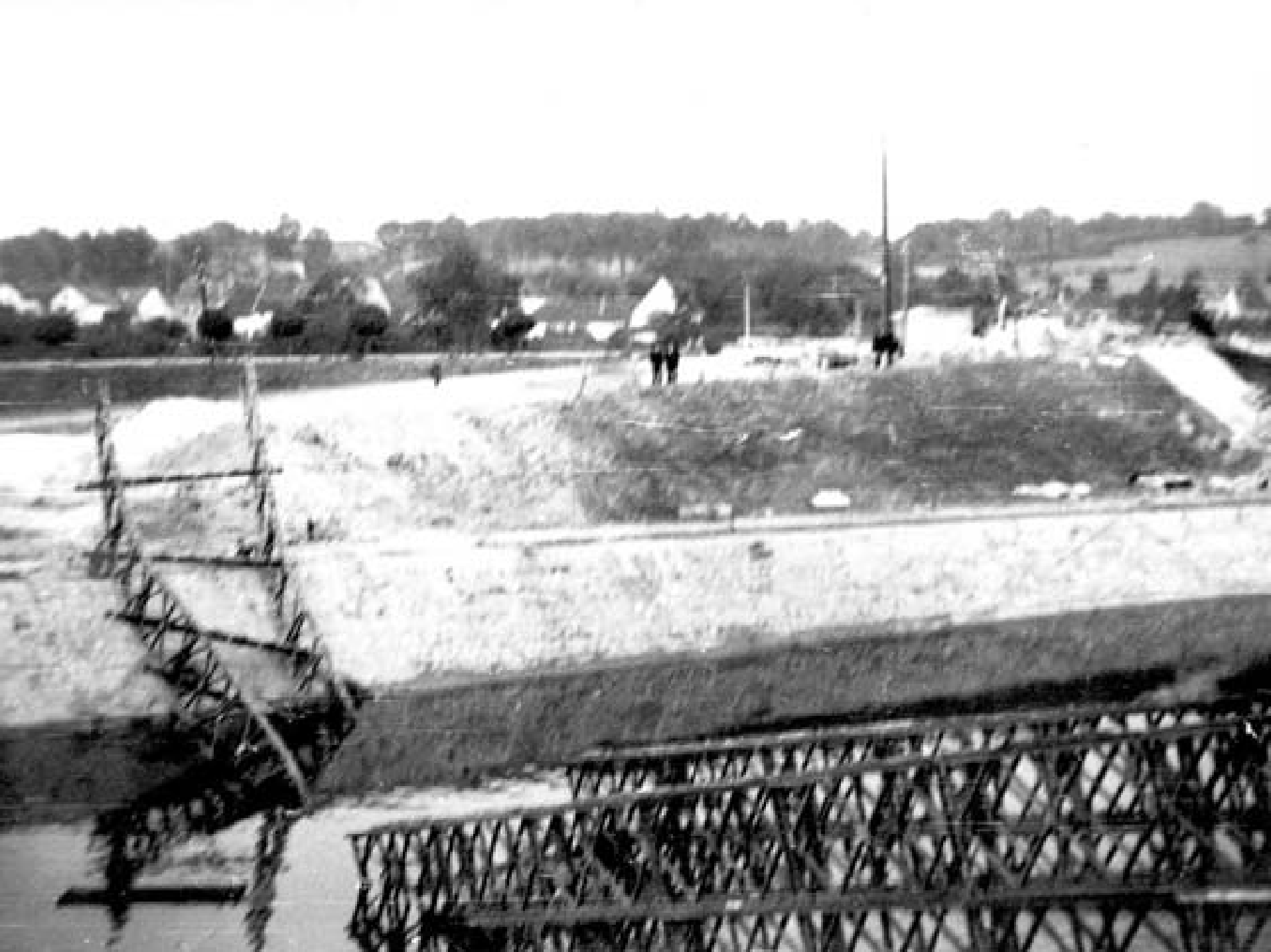
NAMUR (NAMEN)





Failed panel, BB Albert Canal, Belgium 82nd Engrs. C BN 16 Sept. '44



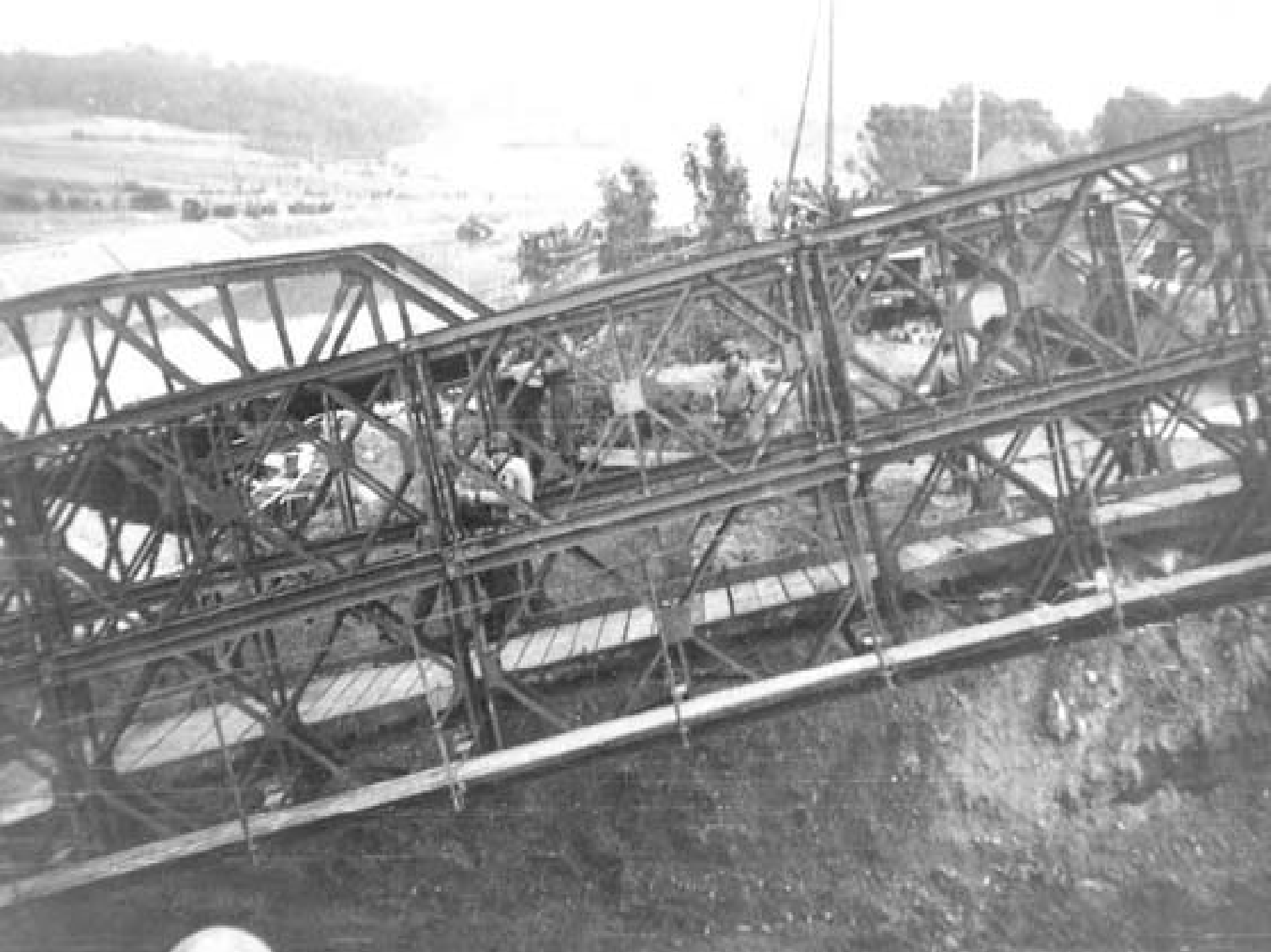




Canne, Belgium 16 Sept. '44



Albert Canal, Belgium





40' DDBB-CL 30  
CANNE, BELGIUM  
82<sup>nd</sup> ENGRS. 16 SEPT. 44

82138

40' DD BB-CL 30 Canne, Belgium 82nd Engrs. 16 Sept. '44

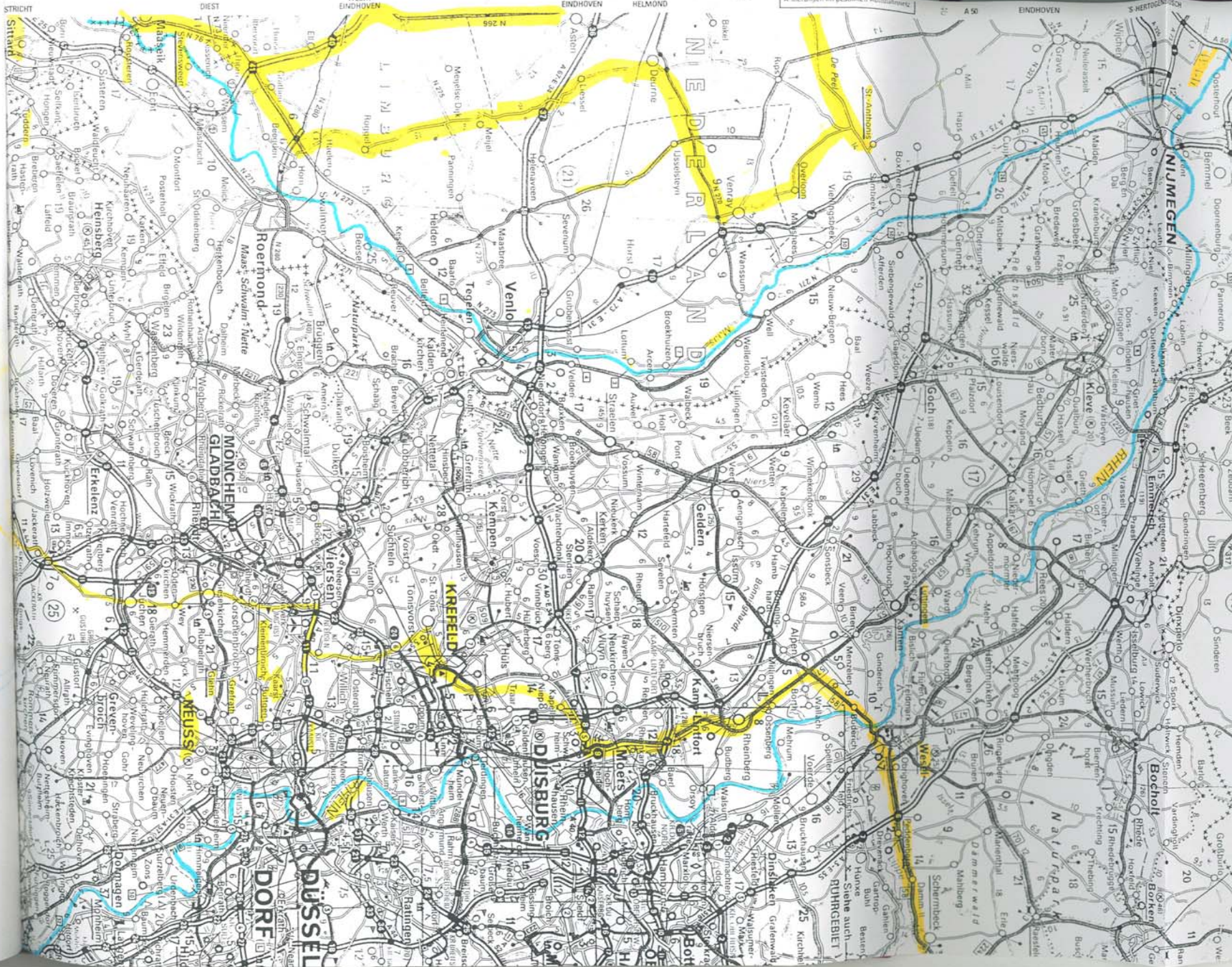


Barge - Floating Crib BB  
Albert Canal Belgium  
82ND ENGR C BN  
16 Sept 1944

82140

Barge - Floating Crib BB, Albert Canal, Belgium, 82nd Engr. C BN 16 Sept '44





A 50

NIEDERRHEINLAND

NIJMEGEN

MÖNCHENGLADBACH

KREFELD

DÜSSELDORF

BOCHOLT

NATURPARK

RURRGEBIET

STRICHT

DIEST

WEERT

EINDHOVEN

HELMOND

A 50

EINDHOVEN

S. HERTOGENDIJK

Roermond

Venlo

Geldern

Kommern

Dingden

Heinsberg

Viersen

Kam Lindort

Moers

Wesel

Bocholt

Erkeleitz

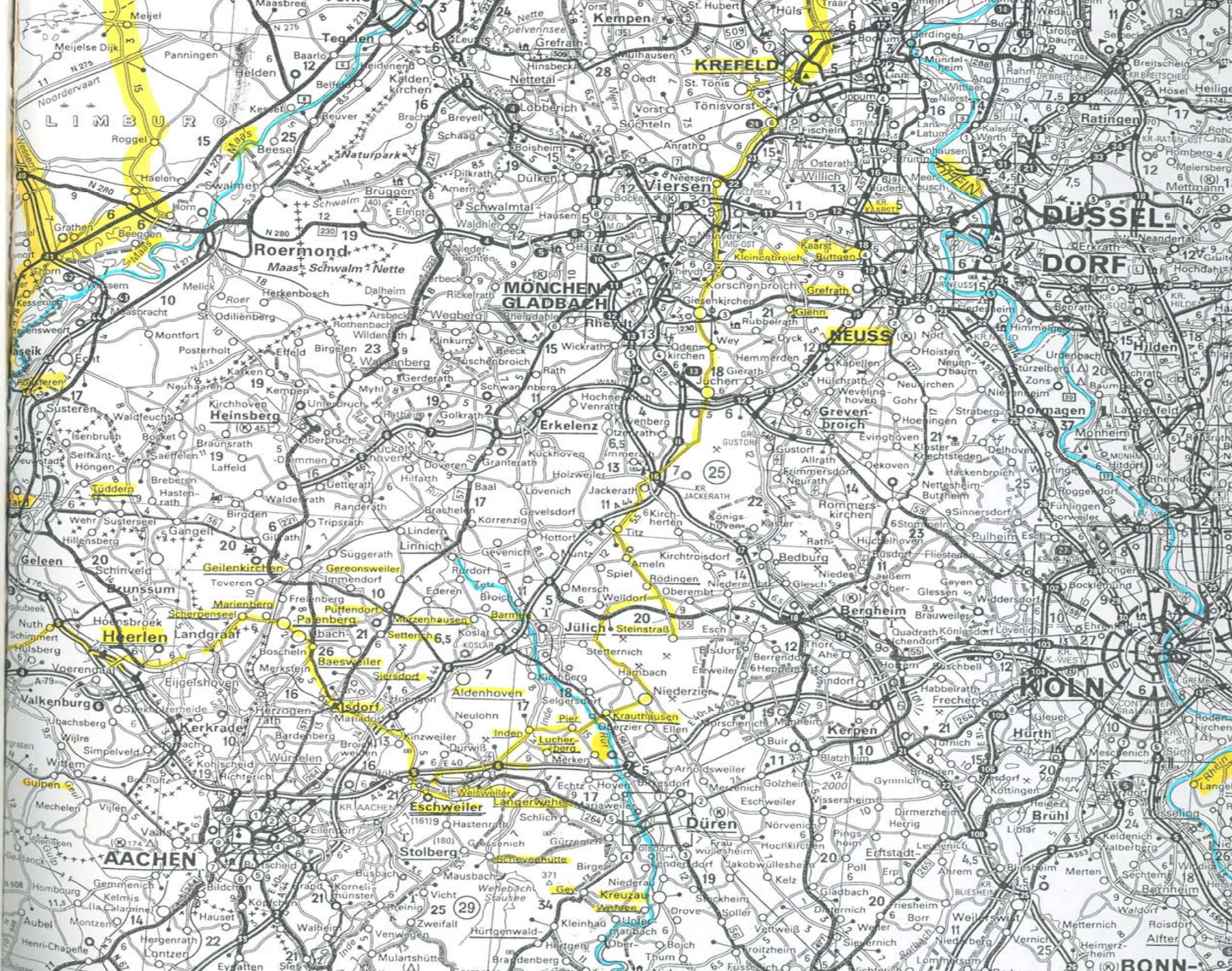
Neuss

Düsseldorf

Bocholt

Wesel

Bocholt







W. J. White in front of camouflaged Bill Box

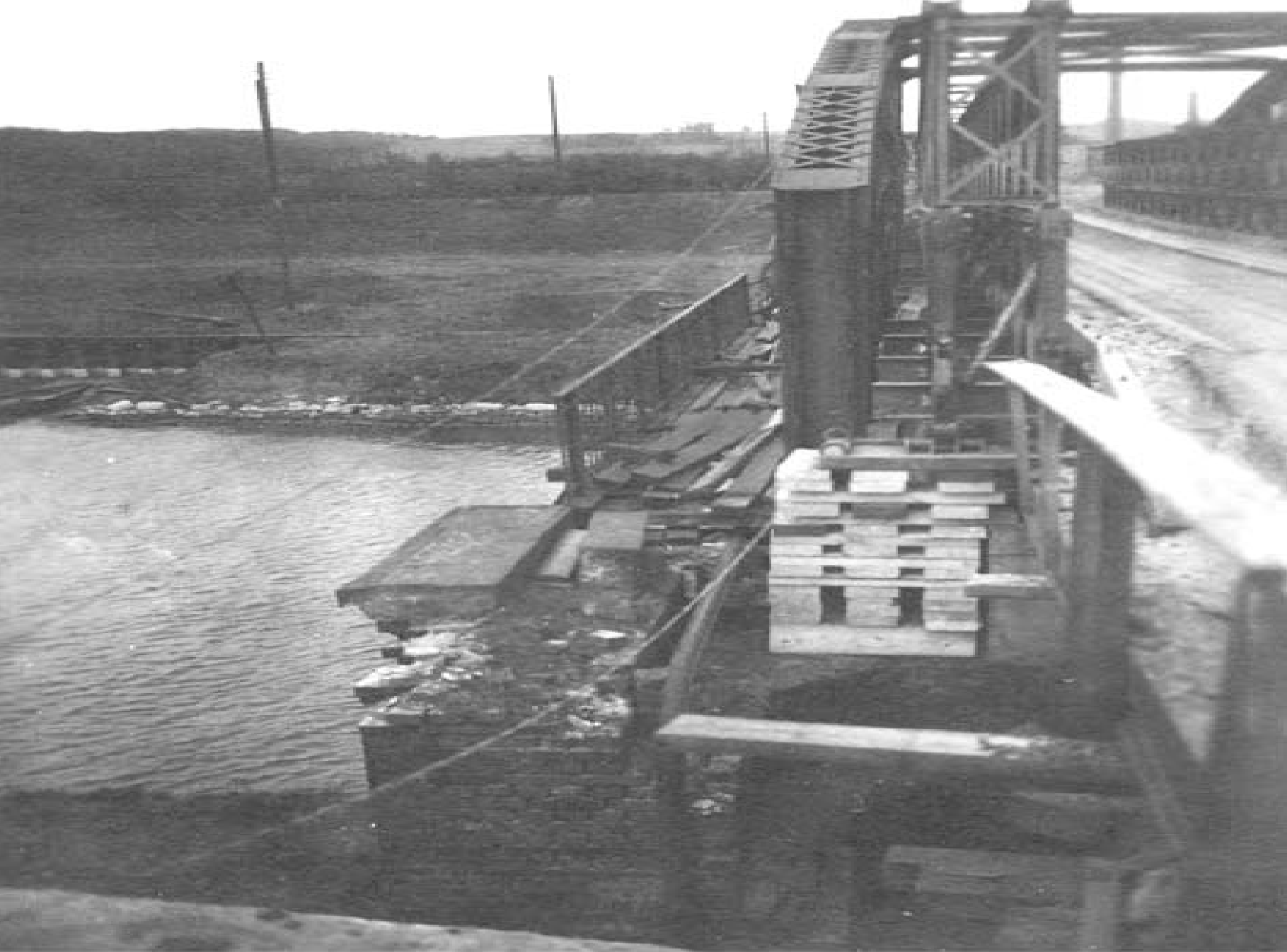


W. J. White in front of camouflaged Bill Box

Footbridge over Roer River in Germany built by B Co., 23 Feb. '45







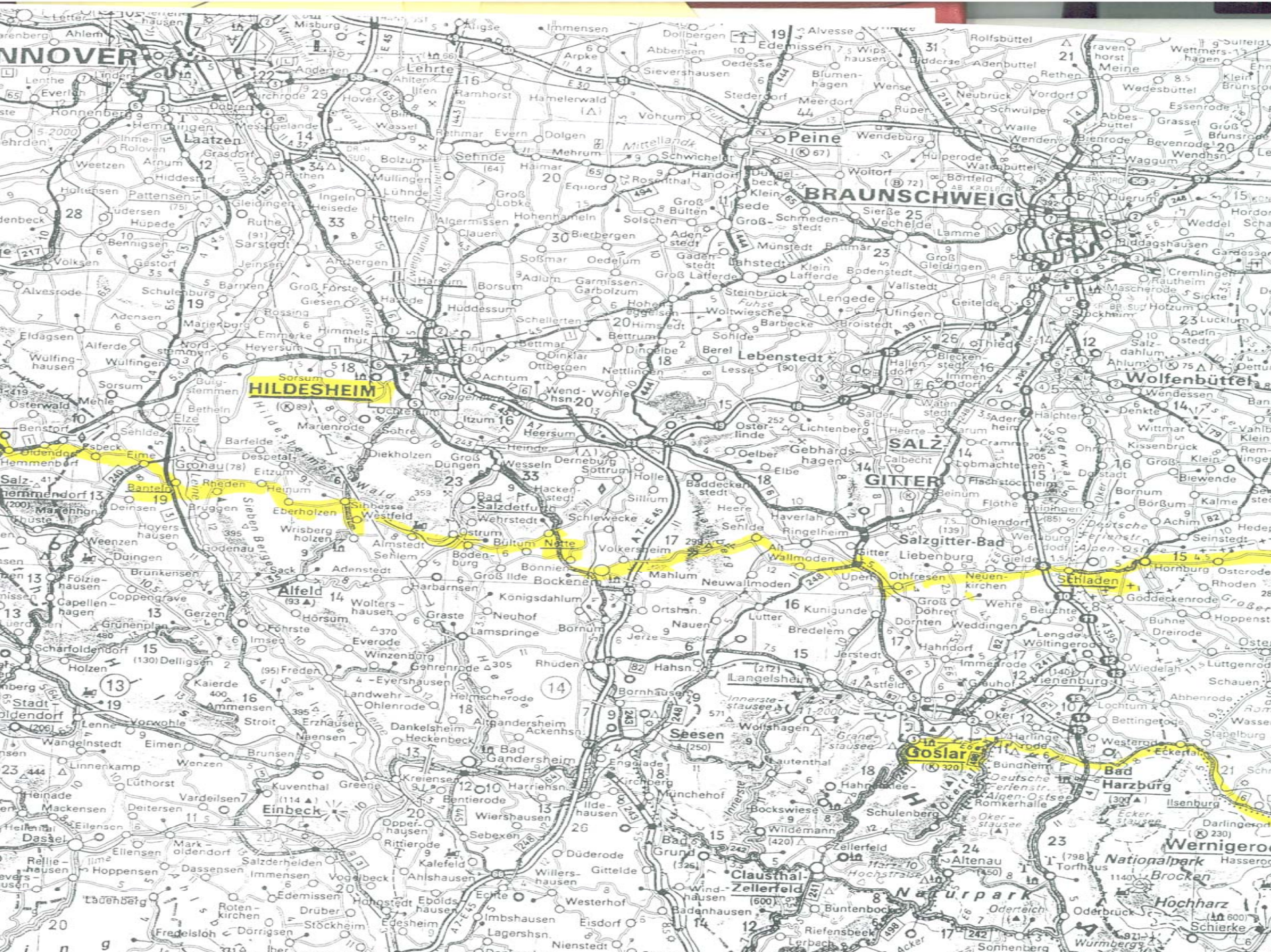
**130' DD Bailey across Dortmund Ems Canal vicinity  
Dolman, Germany - 2 April '45**



130' DD Bailey across Dortmund Ems Canal vicinity Dolman, Germany - 2 April '45



**130' DD Bailey across Dortmund Ems Canal vicinity Dolman, Germany - 2 April '45**



NNOVER

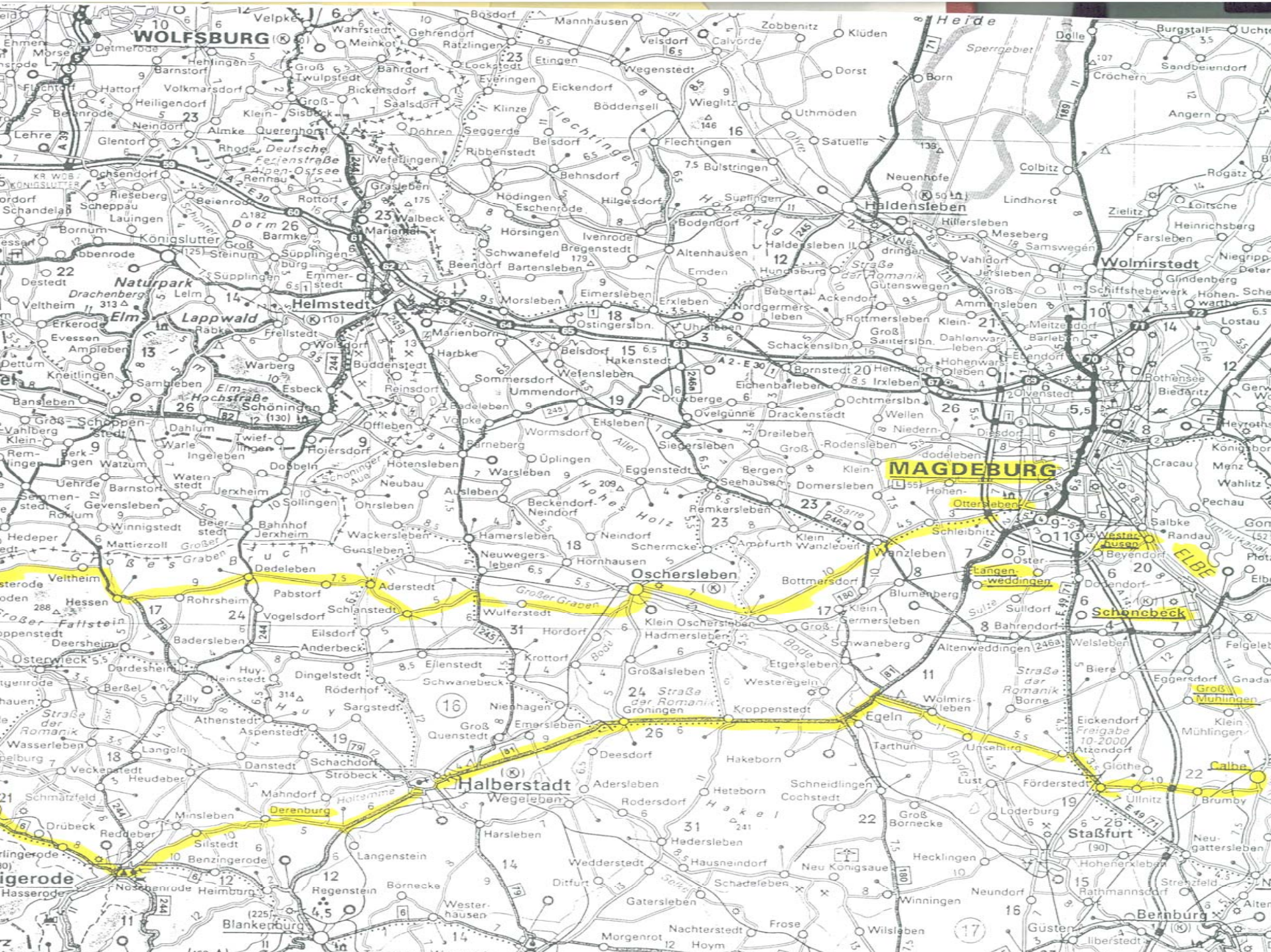
BRUNSCHWEIG

HILDESHEIM

GÖTTINGEN

GOSLAR

Nationalpark Harz



**WOLFBURG**

**Haldensleben**

**Wolmirstedt**

**Naturpark Elm Lappwald**

**Helmstedt**

**MAGDEBURG**

**Otterleben**

**Langenweddingen**

**Schönebeck**

**Oschersleben**

**Halberstadt**

**Staßfurt**

**Blankenburg**

**Bernburg**



**Treadway Bridge Elbe River Vicinity Barby, Germany - 20 April '45**

# TRUMAN BRIDGE

CAUTION  
TO BEARDS  
WITH THE EDGE

CONCRETE

65' *Truman Bridge* *1st Class*

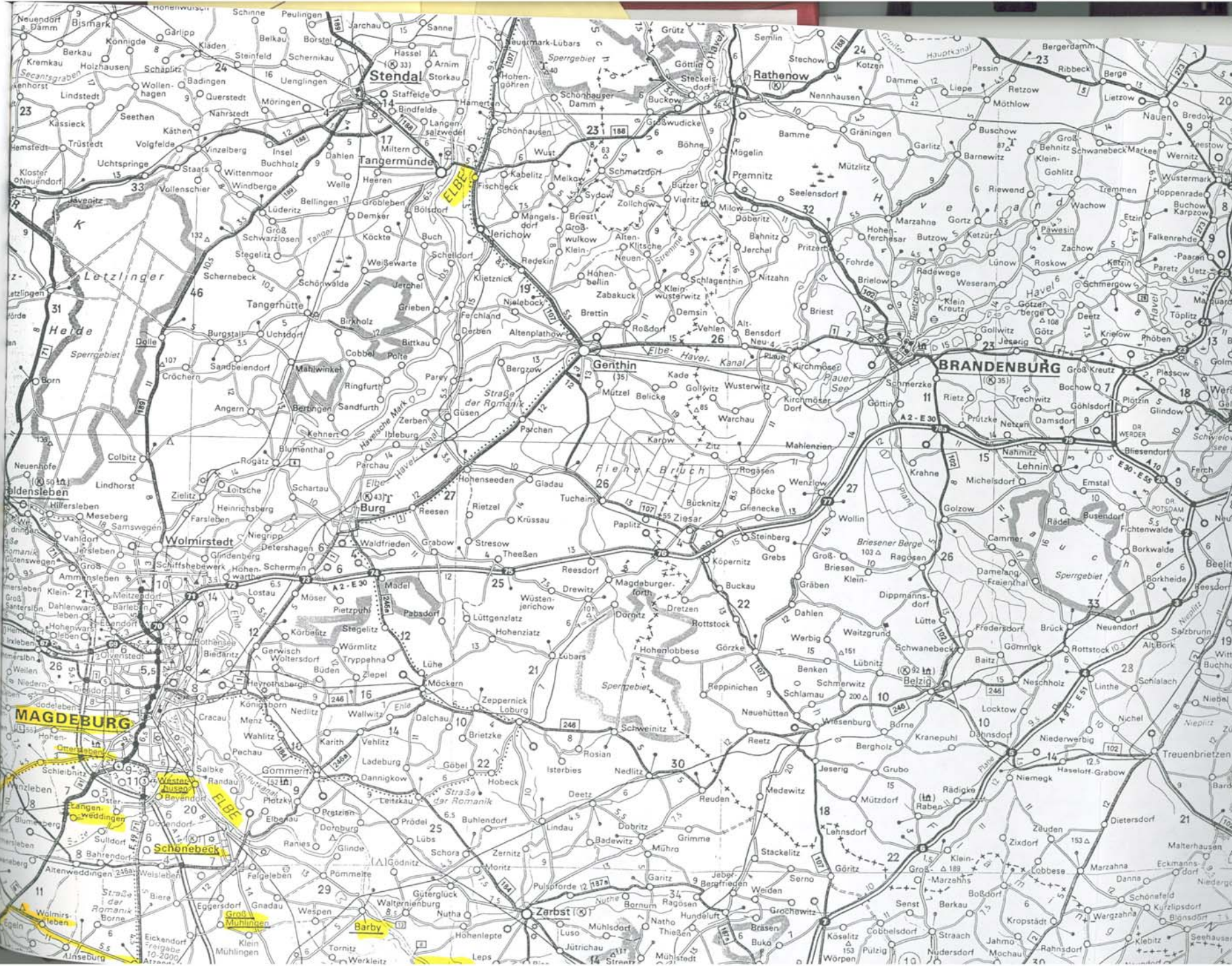
CONSTRUCTED

BY

SIG. EMMERSON

1000 BRIDGE ST.







*82nd Combat Engineer Battalion  
Necrology*

*Killed in Action*

<u>Name</u>	<u>Date</u>	<u>Place</u>	<u>Rank</u>	<u>Company</u>	<u>Circumstances</u>
Beale, Edward J	04/13/45	Grassberkel, Germany		B	Drown - Weser River
Berry, Martin J	12/11/44	Merzenhausen	Pvt.	C	Artillery
Campanele, Joeseph P	11/23/44	Freialdenhoven	Lt.	B	Land Mine
Chemskie, Lawrence	09/13/44	Hasselt, Belgium	Pvt.	B	Taken Prisoner
Fairchild, Edward J	09/13/44	Hasselt, Belgium	Lt.	B	Taken Prisoner
Farney, Emil J			Lt.	B	Land Mine
Focht, Norman T	11/17	Loverich, Germany	Pvt.	C	Artillery
Fry, Edward Jr	11/23/44	Freialdenhoven	Lt.	A	Land Mine
Gettleman, Wm H	04/13/45	Sehladelen, Germany	T5	B	Motorcycle
Grieco, Albert	07/15/44	St. Lo	Pvt.	B	Artillery
Hill, Harris C	04/13/45	Madgeburg	Pvt.	B	Motorcycle
Holland, Samuel	08/05/44	Vire	Pvt.	B	Artillery/Bulldozer
Horner, Wm R	04/13/45	Magdeburg	Pfc.	B	Artillery
Houser, Charles	11/17	Loverich, Germany	Pvt.	C	Artillery
Isaacs, Theodore A	11/17	Loverich, Germany	Pvt.	C	Artillery
Kennedy, Roy C	11/22/44	Freialdenhoven	Pfc.	A	Artillery
Lietzke, Carl E	09/08/44	Gembloux, Belgium	S/Sgt.	C	Rifle
Lucey, George V	10/04/44		Pvt.	B	Missing In Action
Marks, Albert C	09/03/44	Waure, Belgium	Pvt.	B	Rifle
Russo, Sal J	10/04/44		Pvt.	B	Missing In Action
Sanders, George D	10/06/44	Overloon, Holland	T5	A	Artillery
Taber, Kenneth A	11/22/44	Freialdenhoven	T5	A	Artillery
Teed, James W	08/05/44	Vire	T/5	B	Artillery/Bulldozer
Wells, Richard F	09/13/44	Hasselt, Belgium	Cpl.	B	Schmerzer



Officers of 82nd Engineer Combat Battalion. Taken June 1944 on 2-Mile Down, near Warmington, England

Front L-R: Lt. Col Dalrymple, Majors Morris & Green, Captains Tracy, Schneider, Spurrier, Barry, 1st Lts. Wise, Bussel

Back: 1st Lts. Santochi, Corrin, Nicholi, Towery, Malesky, Fry, Myrick, Biggs & Shanley. 2nd Lts.



S/Sgt Harvey A. Gill, DeRidder, LA.; 1<sup>st</sup> Lt. Wilbert L. White, Fort Worth, Texas; S/Sgt Edwin Zwergel, New York City (Queens); T/4 George W. Madison, Virginia; T/5 Burton Dykeman, Johnson City, NY  
Taken at Wattermanstrasse (Kleinbroich), Germany  
March 14, 1945



DEPARTMENT OF THE ARMY

Lineage and Honors

1092d ENGINEER BATTALION

Parent unit constituted 19 December 1942 in the Army of the United States as the 82d Engineer Combat Regiment

Activated 25 January 1943 at Camp Swift, Texas

Regiment broken up 15 March 1943 and its elements reorganized and redesignated as follows:

1st Battalion as the 82d Engineer Combat Battalion  
(Headquarters and Headquarters and Service Company as Headquarters and Headquarters Company, 1115th Engineer Combat Group; 2d Battalion as the 291st Engineer Combat Battalion--hereafter separate lineage)

82d Engineer Combat Battalion inactivated 21 November 1945 at Camp Myles Standish, Massachusetts

Redesignated 10 July 1946 as the 1092d Engineer Combat Battalion and allotted to the West Virginia National Guard

Organized and Federally recognized 16 September 1947 with Headquarters at Parkersburg

Ordered into active Federal service 1 September 1950 at home stations

(1092d Engineer Combat Battalion [NGUS] organized and Federally recognized 26 August 1952 with Headquarters at Parkersburg; redesignated 1 March 1953 as the 1092d Engineer Battalion [NGUS])

Redesignated 15 March 1954 as the 1092d Engineer Battalion

Released from active Federal service 18 March 1955 and reverted to State control; Federal recognition concurrently withdrawn from the 1092d Engineer Battalion (NGUS)

HOME AREA: Northwestern West Virginia

# BRIDGE INSTALLATIONS

TYPE OF BRIDGE	LENGTH	DATE	INSTALLED BY	NEAREST TOWN	NO.	TYPE OF BRIDGE	LENGTH	DATE	INSTAL
Dry Tdwy	36'	9 July	295th & 992nd	Aire	52.	DDBB	140'	17 Sept	82nd
Dry Tdwy	36'	9 July	295th & 992nd	Aire	53.	DSBB	60'	21 Sept	295th
2 Way Timber	24'	10 July	295th	Aire	54.	Timber	54'	30 Sept	295th
TSBB	110'	12 July	234th	Cavigny	55.	Dry Tdwy	24'	5 Oct	82nd &
Tdwy	24'	16 July	234th & 992nd	La Meauffe	56.	Dry Tdwy	36'	7 Oct	82nd
TSBB	110'	17 July	234th	La Meauffe	57.	RR Stringer	18'	12 Oct	234th
DDBB	130'	19 July	234th	Pont Hebert	58.	RR Stringer	25'	14 Oct	234th
Tres Tdwy	156'	19 July	234th & 992nd	Pont Hebert	59.	Timber	48'	15 Oct	295th
Timber	16'	26 July	234th	La Meauffe	60.	Dry Tdwy	48'	19 Oct	82nd &
TSBB	110'	28 July	234th	Gourfaleur	61.	Dry Tdwy	48'	19 Oct	295th &
Floating Tdwy	108'	28 July	295th & 992nd	St Lo	62.	Dry Tdwy	48'	19 Oct	295th &
Open Span Tdwy	36'	28 July	295th & 992nd	St Lo	63.	Timber	48'	20 Oct	295th
TSBB	110'	28 July	82nd	Candol	64.	Timber	25'	30 Dec	82nd
Tres Tdwy	84'	28 July	82nd & 992nd	Candol	65.	Timber Tres.	60'	28 Jan	295th
TSBB	50'	29 July	295th	St Lo	66.	Floating Tdwy	132'	23 Feb	295th &
DSBB	50'	30 July	295th	St Lo	67.	Trestle Tdwy	72'	23 Feb	295th &
TSBB	90'	30 July	234th	St Lo	68.	Foot Bridge	156'	23 Feb	82nd
TSBB	110'	30 July	234th	Conde-sur-Vire	69.	Dry Tdwy	36'	23 Fe.	82nd &
DSBB	50'	3 Aug	295th	Tessy-sur-Vire	70.	Floating Tdwy	264'	24 Feb	82nd &
DSBB	50'	4 Aug	82nd	Landelles	71.	Dry Tdwy	36'	24 Feb	82nd &
Dry Tdwy	80'	4 Aug	234th	Landelles	72.	Dry Tdwy	36'	25 Feb	295th &
Timber	40'	7 Aug	82nd & 992nd	Pontfarcy	73.	DSBB	80'	25 Feb	295th &
DSBB	40'	12 Aug	82nd	Vire	74.	Dry Tdwy	24'	25 Feb	295th &
Dry Tdwy	40'	15 Aug	295th	Landelles	75.	SSBB	40'	26 Feb	234th &
DSBB	36'	16 Aug	295th & 992nd	Lonlay L'Abbaye	76.	Dry Tdwy	36'	26 Feb	105th &
DSBB	60'	16 Aug	295th	Beauchene	77.	RR Bridge	70'	2 Mar	234th
Timber	24'	16 Aug	295th	Beauchene	78.	DSBB	70'	2 Mar	234th
DSBB	60'	16 Aug	82nd	Beauchene	79.	DSBB	50'	2 Mar	234th
Culvert	60'	23 Aug	234th	Ger	80.	Dry Tdwy	36'	3 Mar	308th &
Culvert		25 Aug	82nd	Damville	81.	TSBB	110'	9 Mar	512th
DSBB	60'	25 Aug	82nd	Tillieres	82.	DSBB	60'	8 Mar	512th
DSBB	60'	25 Aug	295th	Tillieres	83.	Steel Stringer	40'	11 Mar	82nd & 5
Floating Tdwy M-1	720'	28 Aug	295th & 992nd	Evreux	84.	DDBB	130'	16 Mar	82nd & 5
Floating Tdwy M-1	720'	29 Aug	295th & 992nd	Mezieres	85.	Box Culvert	4'	19 Mar	82nd
Floating BB	685'	30 Aug	82nd & 17th Engr	Meulan	86.	Culvert	50'-60"	13 Mar	234th
DSBB	40'	1 Sept	234th	Meulan	87.	Timber Trest.	40'	18 Mar	234th
Dry Tdwy	36'	1 Sept	234th	Santueil	88.	Floating Tdwy			
Dry Tdwy	36'	1 Sept	295th & 992nd	Feuilleres		Modified M-1	1080'		
DSBB	36'	1 Sept	295th & 992nd	Feuilleres	89.	DSBB	130'	25 Mar	234th & 5
DSBB	40'	3 Sept	295th	Feuilleres	90.	TSBB	120'	31 Mar	82nd & 5
SSBB	40'	3 Sept	295th	Feuilleres	91.	Treadway	144'	1 Apr	295th
SSBB	40'	3 Sept	295th	Feuilleres	92.	TSBB	110'	4 Apr	295th & 5
DSBB	30'	7 Sept	234th	Cappy	93.	SSBB	30'	5 Apr	295th & 5
DSBB	70'	7 Sept	234th	Court St Etienne	94.	M2 Fl Tdwy	396'	6 Apr	234th & 5
Dual Carriage BB	30'	8 Sept	234th	Wavre	95.	Floating BB	340'	6 Apr	82nd & 99
Timber	30'	8 Sept	82nd	Jauchelet	96.	SSBB	40'	10 Apr	234th & 5
Timber	24'	11 Sept	295th	Court St Etienne	97.	M2 Fl Tdwy	636'	10 Apr	234th & 5
Timber	24'	12 Sept	82nd	Hougaerde	98.	M2 Fl Tdwy	240'	13 Apr	295th & 9
Floating Tdwy	228'	12 Sept	234th & 992nd	Bassange	99.	M2 Fl Tdwy	516'	16 Apr	234th & 9
Floating Tdwy	564'	13 Sept	234th & 992nd	Hermallesous	100.	M2 Fl Tdwy	276'	17 Apr	234th & 9
Timber	24'	13 Sept	295th	Argenteau				20 Apr	234th & 9
DSBB	60'	16 Sept	295th	Hougaerde					
Floating Tdwy	165'	16 Sept	234th & 17th Engr	Aalbeek					
St Stringer	26'	17 Sept	82nd	Canne					
				Jodigne					

TOTAL: 10,928'

# Presidential Unit Citation

Elbe River

GENERAL ORDERS  
No. 11

WAR DEPARTMENT,  
Washington 25, DC, 30 January, 1946

**BATTLE HONORS.** *As authorized by Executive Order 9396 (sec. I, W D Bul. 22, 1943), superseding Executive Order 9075 (sec. III, W D Bul. 11, 1942), citations of the following units in the general orders indicated are confirmed under the provisions of section IV, W D Circular 333, 1943, in the name of the President of the United States as public evidence of deserved honor and distinction. The citations read as follows:*

\*\*\*\*\*

*E3. The 82nd Engineer Combat Battalion is cited for outstanding performance of duty in action against the enemy on 12 and 13, April 1945, near Magdeburg, Germany. Although taxed strenuously while supporting the 2d Armored Division's long and hazardous drive from the Rhine River, this battalion accepted with great determination its mission of bridging the Elbe River. Even though it was impossible to make a detailed reconnaissance of crossing sites, the officers in command made a prompt decision, and operations began. Two bridges were approaching completion when intense enemy artillery fire destroyed both of the crossings. At this point, all troops were evacuated from the far shore, and general casualties were sustained. The battalion remained at the site, handling assault boats until evacuation was completed. Then, a third attempt to establish a crossing was made and resulted in the first bridgehead across the vitally important river. The skill, courage, and efficient efforts of the officers and men of the 82nd Engineer Combat Battalion assured the successful assault, despite fierce enemy resistance. Their achievement contributed materially toward the completion of the Allies' mission and was in keeping with the highest standards of the armed forces of the United States. (General Orders 642, Headquarters Seventh Army, Western Military District, 9 November 1945, as approved by the Commanding General, United States Army Forces, European Theater (Main).)*

\*\*\*\*\*

BY ORDER OF THE SECRETARY OF WAR:

OFFICIAL:

EDWARD F. WITSELL  
Major General  
Acting The Adjutant General

DWIGHT D. EISENHOWER  
Chief of Staff

1943



1945

82nd Engineer Combat Battalion